

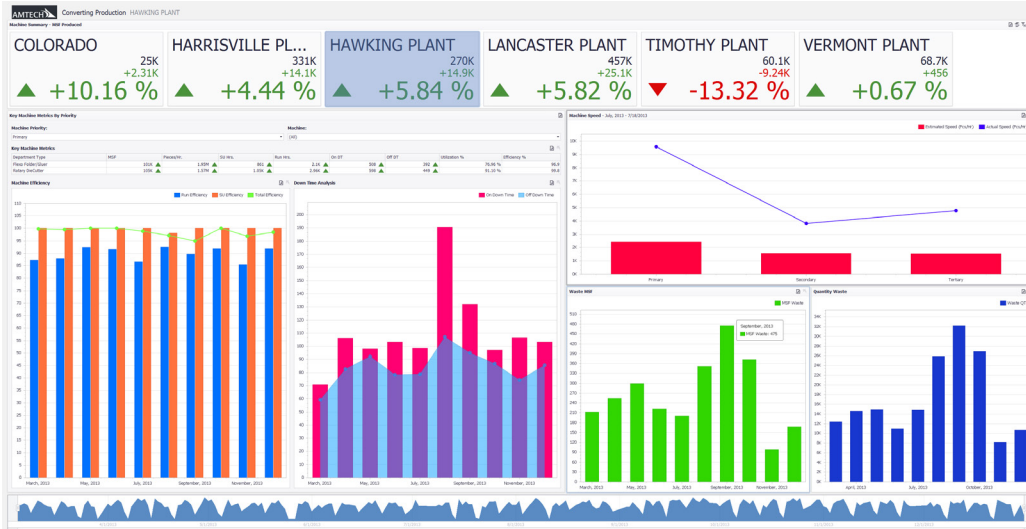


# Amtech *Visual* Analytics

Analyze, Predict AND Act

Amtech *Visual* Analytics collects every point of data. Then it analyzes, spots trends, create KPI's, and presents them to you graphically. Spend less time looking at spreadsheets and reports and more time seeing the future and taking profitable actions.

Cloud-Based  
Visualizations



## SALES: Optimize customers, profits, and growth

- Customer Risk analysis (complaints + deliveries)
- Trend analysis for Sales, Contribution and Profit
- Watch list of customers
- Quote Hit analysis
- Sales rep performance



## FINANCE: If it doesn't make cents, it won't make money.

- Proactive Credit Management (aging and exposure)
- Profit/loss trends
- Financial Ratios
- Job Cost analysis by plant and product type



## PRODUCTION: Get a birds-eye view of the plant floor:

- Downtime and machine utilization
- Detailed Waste tracking
- Visual speed and efficiency charts
- Estimated versus actual machine performance



## LOGISTICS: View your delivery fleet in real time:

- Estimated Time of Arrival (ETA) by truck and trip
- Real-time truck locations on a map
- On-time deliveries
- Short Shipment Tracker

## Powered by Amtech's Data Warehouse\*

Data Warehouses are central repositories of integrated data from multiple sources that are optimized for analytics. Traditional reporting does a good job of telling you what has happened in the past. Amtech's Data Warehouse enables you to tell why something has happened, and even predicts what will happen in the future. Amtech's Data Warehouse is:

- **Integrated:** Connects to multiple data sources (i.e. Imaginera, 3rd party CAD and Scheduling)
- **Vast:** The LARGEST data repository in the Packaging Industry
- **Secure:** Multi-level security where users can analyze data particular to subject areas, like "sales" or "production"
- **Flexible:** Endless possibilities for reporting, PUSH scheduling feature pushes data to users when they want it

\*Data Warehouse sold separately